



EnvoyDMS

CENTRAL CONTROL SOFTWARE



Only Skyline's EnvoyDMS Central Control Software provides the flexibility and robust feature set needed to quickly and easily monitor and control multiple, multi-vendor Dynamic Message Signs (DMS). Designed and field-tested to empower agencies with full message and functionality control of signs with robust feedback capabilities, EnvoyDMS Central Control Software can be used with any NTCIP-compliant DMS system from any manufacturer.

Features

- Reliably and immediately communicate up-to-the-minute alerts to all of your NTCIP-compliant DMS
- Communicate with, monitor and control any NTCIP-compliant dynamic message sign
- Administer multiple users with password-protected levels of sign control
- Monitor signs equipped with robust feedback capabilities
- Obtain Skyline's unmatched customer service and technical support
- Realize a high return on your agency and community investment
- Can stand alone or perform as a critical link in a large ATM system
- Create color messages for signs which support color
- Create and download your own graphics, including importing graphics from standard image types (jpeg, bmp, png)

ITS-grade® Features	Primary Benefit	Tech	Standard	Premier
Field-proven Technology				
Full NTCIP compliance	An industry leader in the definition, implementation, and deployment of NTCIP. Field-deployed experience and third party tested compliance. Refer to NTCIP standards chart for additional details	S	S	S
Highly flexible client-server architecture ★	Meeting the true needs of an agency, Skyline Products' architecture allows simultaneous support of multiple, local and remote operators—connect to the central from any local or remote location to securely monitor or control signs	N/A	N/A	S
Multi-threaded code	Permits simultaneous control and monitoring of multiple signs	N/A	S	S
Multi-user ★	Allows simultaneous sign control and monitoring by multiple users	N/A	N/A	S
Compatible with multiple communications media / protocols	Including dial-up, fiber optic, hardwire multi-drop, wireless, cellular, CDPD, TCP/IP etc.	S	S	S
Quick deployment	Easily installed on operator systems for instant usage	S	S	S
Intuitive interface	Operators can easily navigate through the interface to quickly operate any NTCIP-compliant sign within the system, seldom requiring the use of on-line help	S	S	S
Optional features				
Maintenance plan	An optional maintenance plan includes telephone technical support, bug fixes, major and minor updates, and NTCIP-compliance updates as released by Skyline	O	O	O

S = Standard feature O = Optional feature N/A = Not available

★ Skyline Products' industry-first feature

R3.02.17



EnvoyDMS

CENTRAL CONTROL SOFTWARE



ITS-grade® Features	Primary Benefit	Tech	Standard	Premier
Most comprehensive feature set on the market				
Management Overview				
Sign management	Easily add or delete signs and define characteristics as necessary	S	S	S
Multiple map views	Allows trouble-free, visual point-and-click sign management, flexibly supporting multiple user-defined maps (state, city, area, etc.)	N/A	N/A	S
Icon view ★	View all signs within the system at-a-glance, including physical locations, current displayed messages, real-time indication of errors and failures, etc; manage single or multiple signs with easy click-and-drag or double-click commands	N/A	N/A	S
Message Control				
Message Preview	Supports full preview of multi-page or flashing messages based on actual message timing	S	S	S
Message management	Store any number of pre-approved messages grouped into multiple libraries for maximum effectiveness	N/A	S	S
Sign Groups	Fast message activation on user-defined and user-named sets of signs	N/A	N/A	S
Scheduled messages	Build schedules based on date and time of day to control multiple signs with either one-time or recurring events	N/A	N/A	S
WYSIWYG+ status display and message editor ★	Quickly and easily compose and edit messages on the fly in a What-You-See-Is-What-You-Get (WYSIWYG+) environment. Also view currently displayed messages in WYSIWYG+	S	S	S
Font creation and control	Create and download your own fonts or special characters using click-and-drag; highlight text and select fonts as desired	S	S	S
Spell checker and approved word lists	Safety net to verify spelling accuracy and to control message wording	N/A	N/A	S
Sign Diagnostics and Configuration				
Display results of remote pixel tests (if supported by DMS) for maintenance purposes	Displays test results of pixel operational status in WYSIWYG+ bitmap. On sophisticated signs, able to verify status at the half-pixel level without causing a noticeable distraction to motorists.	S	S	S
True Message Display Verification (TMDV) ★	For advanced Skyline signs, electronically displays in realtime (based on user-defined polling intervals) the actual message that is visible to the motorist on a pixel-by-pixel basis, including any pixel errors or failures, without disturbing the message	S	S	S
Real-time, automatic sign status monitoring	Whether initiated by the operator or automatically performed at user-defined polling intervals, remotely monitor signs equipped with robust feedback capabilities increasing motorist safety and reducing the volume of costly maintenance calls	S	S	S
Supports sign controller callbacks	Keeps current with sign status via event-driven callbacks from the sign controller (dial-up connection or ethernet only)	N/A	S	S
Administration				
Easy-to-use administrative control and management of user privileges	Protect your DMS system via a variety of user-privilege assignments; enhances security and alleviates administrative nightmares	N/A	S	S
Activity log	All critical events are logged in an industry-standard database, which allows data to be manipulated and viewed via third-party software; particularly useful for maintenance and liability issues	S	S	S
Log view	Activity log data can be viewed from within the application for quick examination and analysis	S	S	S
Context-sensitive help	While navigating within the application, help for each specific section is only a click away	S	S	S

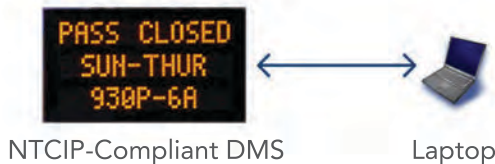
EnvoyDMS Central Control Software

SELECT A VERSION APPROPRIATE TO YOUR NEEDS

1 TECH

STANDARD NTCIP MAINTENANCE CONTROL

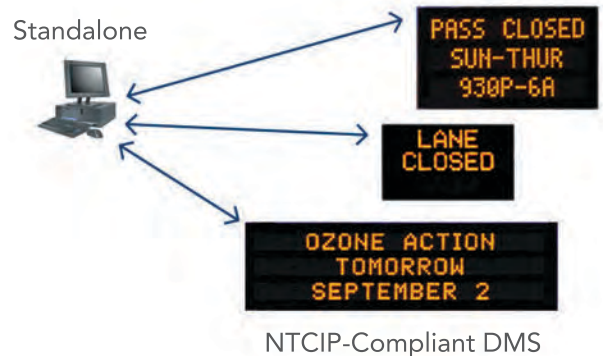
Local (or remote) control of one DMS at a time for DMS maintenance diagnostics and local control, this feature is included with purchase of the Premier version.



2 STANDARD

STANDALONE SITE CENTRAL CONTROL

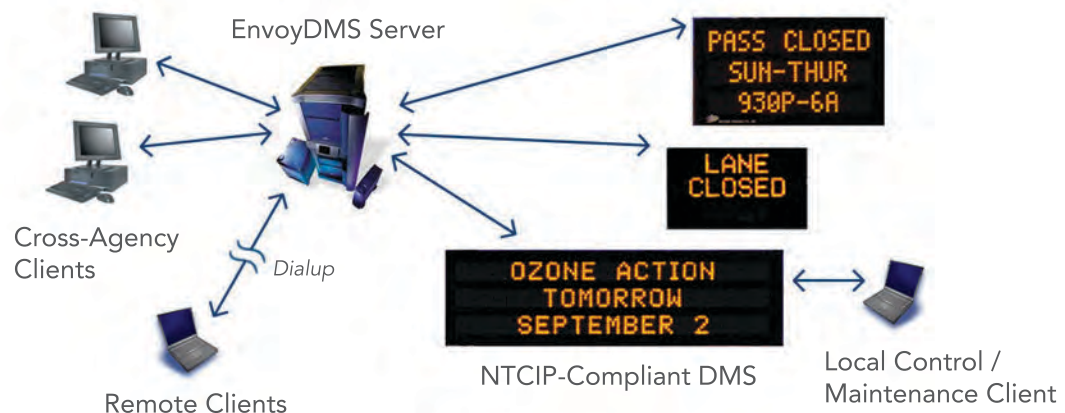
This option offers multi-sign control from a single computer.



3 PREMIER

CLIENT-SERVER CENTRAL CONTROL

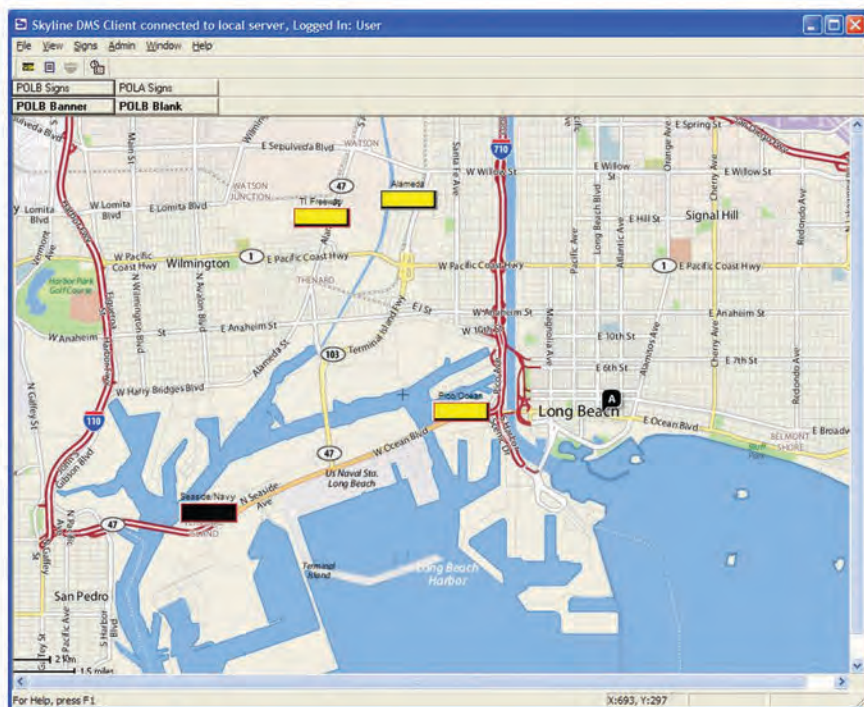
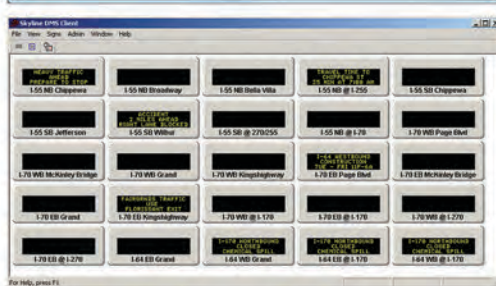
The most advanced DMS control system available, the Premier version enables multiple, simultaneous operators, connected locally or remotely, to control or monitor any NTCIP-compatible DMS in real-time. User privileges are defined by the controlling agency's administrator. Ideal application for large or small DOT agencies, county agencies, municipalities, or cross-agency control. Also includes Tech licenses for local control and maintenance purposes.



Providing the Highest Return on Investment for Your ITS Projects

Supported NTCIP Standards

1101	NTCIP Simple Transportation Management Framework (STMF)
1102	NTCIP Octet Encoding Rules (OER)
1103	NTCIP Transportation Management Protocol (TMP)
1201	NTCIP Global Object (GO) Definitions
1203	NTCIP Object Definitions of Dynamic Message Signs (DMS)
2001	NTCIP Class B Profile
2101	NTCIP SP-PMPP/RS232
2102	NTCIP SP-PMPP/FSK
2103	NTCIP SP-PPP/RS232
2104	NTCIP Ethernet Subnetwork Profile
2201	NTCIP TP-Transportation Transport Profile
2202	NTCIP TP-Internet
2301	NTCIP AP-STMF



Skyline EnvoyDMS Central Control Software provides user-friendly system and message control interfaces